

Newport to Bermuda 2022



**WELCOME TO THE MOST ADVANCED
RACE WEATHER PACKAGE AVAILABLE.**

America's Cup & Olympic-Level Support is now
available for the Bermuda Race



Featuring Top Experts

Our packages feature **exclusive data and analyses** from these top experts in their fields:



Chelsea Carlson

We work with high-performance racing teams including the US Olympic Sailing Team and around-the-world campaigns. What sets us apart is that we focus on teaching you how to apply relevant weather principles to your race prep strategy to gain a competitive edge. As a degreed meteorologist and navigator, I set out to create the data + analysis package I needed/wanted for the N2B - and now we're offering it to you.



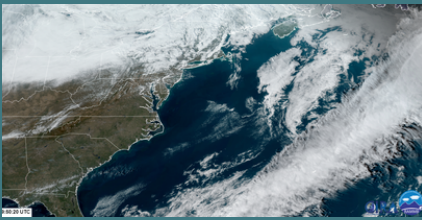
Kevin Rosa

Current Lab is an oceanography startup specializing in hyper-detailed ocean simulations. Our tidal current forecasts have been trusted at international sailing events including the America's Cup and the Tokyo Olympics. Founder Kevin Rosa, PhD holds degrees in physics and oceanography and has served as an oceanographer at the Dept of Energy and Dept of Defense. www.current-lab.com



Milan Curcic & Josh Noe

Cloudrun (<https://cloudrun.co>) is an online service that allows you to run numerical weather prediction models on-demand. Milan specializes in wind-wave interaction and building operational weather prediction systems. Josh is an expert in building full-stack, user-facing web applications. Since 2018, we've served over a dozen businesses from the US, Canada, Netherlands, and Brazil in energy, climate, competitive sailing, and weather prediction sectors.



Feature Descriptions



SeaTactics Weather Analysis

- Discussion of large-scale weather patterns down to microscale features.
- Suggested routing + strategy based on your boat's estimated speed. (Standard Package)
- or custom to your polars. (Custom Packages LIMITED TO 10 SPOTS)

Cloudrun Weather Data

- 2x High-res grib files - 1km "start day" .grb file covering first ~150 mi of race (sent 6/16 + 6/17 before start)
- 9x High-res grib files - 3km "full course" .grb file along rhumb line to Bermuda (sent daily 6/14- 6/22 incl during race)
- Not boat specific & freely available to all competitors with purchase of our race package

Current Lab Ocean Analysis

- Discussion of Gulf Stream meanders and eddies based on synthesis of computer models and satellite data.
- Start-of-race tidal current mapping.
- Wave (sea state) monitoring.

Current Lab Ocean Data

- 0.25 km resolution Rhode Island Sound tidal currents GRIB files.
- 3.3 km resolution Gulf Stream ocean currents GRIB files.
- Exclusive login access to Current Lab's ocean current map for viewing the data without using GRIB files.

Weather + Strategy Briefings

- 1 Weather + strategy briefing on Race Day for SeaTactics clients included with Standard Package
- 30 min individual team briefings with Chelsea & Kevin available on a LIMITED BASIS with Custom Package only [10 spots]

PACKAGE COMPARISON

LIMITED TO 10 BOATS

FEATURES

CUSTOM
\$1,000.00

STANDARD
\$750.00

SeaTactics Weather Analysis
based on your boat's estimated speed



SeaTactics Custom Weather Analysis
based on your boat polars



High-resolution weather grib files by
Cloudrun (sent through end of race)



Current Lab Ocean Analysis



Current Lab Ocean Data (grib files+app)



30 min Exclusive Team Briefing on 6/16
with Chelsea + Kevin



Group Weather + Strategy Briefing
on race morning 6/17



HOW TO SIGN UP

1. Go to our sign up page here: www.sea-tactics.com/n2b-sign-up

Enter your info, choose your package, and submit

Within 48 hours, you will receive an e-invoice where you can pay your deposit.

2. Pay 50% Deposit to hold your spot

- Remaining 50% will be charged on Monday June 13th 2022
- Cancellation policy for ALL packages - cancel before **May 27th** and receive your deposit back, otherwise deposit cannot be refunded.

3. Custom Packages Only: Choose your briefing time slot for 6/16

We will notify you by email when its time to choose your time slot for the Custom team briefing, and more details about how/where to join. FIRST COME FIRST SERVE.

Time slots run in 30 min increments from 9am to 4pm.

4. Send final details

We need your email list and final racing boat polars ASAP or **by May 25th**

N2B DELIVERY SCHEDULE

DATE	WEATHER ANALYSIS	WEATHER GRIBS	OCEAN ANALYSIS	OCEAN GRIBS	BRIEFINGS
FRI 5/27			✓	✓	
FRI 6/3			✓	✓	
FRI 6/10	✓		✓	✓	
MON 6/13	✓				
TUES 6/14	✓	✓	✓	✓	
WED 6/15	✓	✓			
THU 6/16	✓	✓	✓	✓	CUSTOM BRIEFINGS
 FRI 6/17	✓	✓	✓	✓	GENERAL BRIEFING

6/14-6/22

DAILY WEATHER GRIBS DELIVERED
[DURING RACE TO BOAT EMAIL]

5/27-6/22

EXCLUSIVE CURRENT LAB APP ACCESS