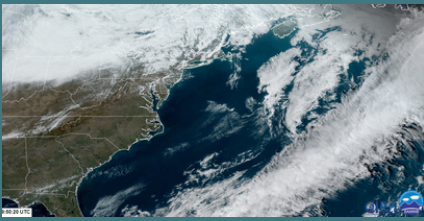


Newport to Bermuda 2024



**WELCOME TO THE MOST ADVANCED
RACE WEATHER PACKAGE AVAILABLE.**

High-Performance Racing Support
for the Bermuda Race



Feature Descriptions



SeaTactics Weather Analysis

- Discussion of large-scale weather patterns down to microscale features.
- Suggested routing + strategy based on your boat's estimated speed. (Standard Package)
- or custom to your polars. (Custom Packages only)
- Routing based on Gulf Stream meanders and eddies in conjunction with Current Lab

Cloudrun Weather Data

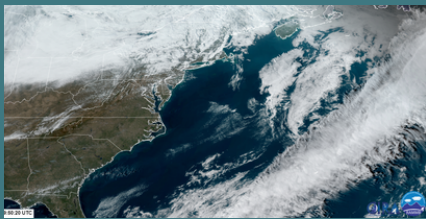
- 2x High-res grib - 1km "start day" .grb file covering first ~150 mi of race (sent Thu + Fri before start)
- High-res grib - 3km "full course" .grb files along rhumb line to Bermuda
- Not boat specific & available with purchase of our Standard race package

Weather + Strategy Briefings

- 1 Weather + strategy briefing on Race Day for all SeaTactics clients included with Standard Package
- 30 min individual team briefings with Ian (SeaTactics) & Kevin (CurrentLab) available on a LIMITED BASIS with Custom Package only

We will be partnering again with Current Lab for Gulf Stream Analysis, but sign up & billing will be run through Current Lab.

SeaTactics Clients will receive a special discount code at sign up.



What You Get



DATE	WEATHER ANALYSIS/FORECAST	HIGH RES WEATHER GRIBS	BRIEFINGS
FRI 6/14	✓		
MON 6/17	✓		
TUES 6/18	✓	✓	
WED 6/19	✓	✓	
THU 6/20	✓	✓	CUSTOM BRIEFINGS
FRI 6/21	✓	✓	GROUP BRIEFING

Featuring Top Expertise

Our packages feature exclusive data and analyses from top experts in their fields



We work with high-performance racing teams including the US Olympic Sailing Team and around-the-world campaigns. What sets us apart is that we focus on teaching you how to apply relevant weather principles to your race prep strategy to gain a competitive edge. We are meteorologists and navigators with the goal of making complex topics like weather simpler and easier to apply out on the water.

N2B
Forecaster
Ian Beckley

Ian is a meteorologist and navigator hailing from the midwest. He acquired his M.S. from UW-Madison specializing in mid-latitude systems, and he's now pursuing a PhD there looking at tropical systems. Beyond academia, he also serves as the head coach for UW-Madison's sailing team, boat captain for a J111, and contributes as a weather consultant and crew member across various programs.

Our Partners



CLOUDRUN

CloudRun data will be included in the SeaTactics weather package.



CurrentLab

SeaTactics customers will get an exclusive discount to CurrentLab's N2B package

WX PACKAGE COMPARISON

FEATURES

CUSTOM
\$850.00

STANDARD
\$600.00

SOLD OUT FOR 2024

SeaTactics Weather Analysis
based on your boat's estimated speed



SeaTactics Custom Weather Analysis
based on your boat polars



High-resolution weather grib files by
Cloudrun



Group Weather + Strategy Briefing
on race morning 6/21



30 min Exclusive Team Briefing on Thurs
6/20



HOW TO SIGN UP

1. Go to our sign up page here: www.sea-tactics.com/n2b-sign-up

Enter your info, choose your package, and submit

Within 2 days, you will receive an e-invoice where you can pay your deposit.

2. Pay 50% Deposit Now to hold your spot

- Remaining 50% will be charged on Wednesday May 15th.
- Cancellation policy for ALL packages - Your 50% deposit is refundable until **May 15th**, after which refunds may not be given.

SOLD OUT FOR 2024

3. **Custom Packages Only:** Choose your briefing time slot for Thu 6/20

We will notify you by email when its time to choose your time slot for the Custom team briefing, and more details about how/where to join. **FIRST COME FIRST SERVE.**

Your briefing will be 30 min long, hosted on Zoom, and time slots will run from 9am to 3pm.

4. Send final details

We need your final **crew/boat email list** and racing **boat polars** ASAP or **by May 15th at the latest.**